



# TEST REPORT

According to ANSI/IES LM-80-15  
For

HL

<b>Report Type:</b> 6000 Hours Test Report		<b>Product Type:</b> LED Package	
<b>Reviewed By:</b>	Pote Wang		
<b>Report Number:</b>	SZ2220119-02803E-10-6000		
<b>Test Date:</b>	2022-01-26 to 2022-10-13		
<b>Report Date:</b>	2022-10-31		
<b>Approved by:</b>	Blake Zhang / EE Engineer		

**Prepared By:**  
 Bay Area Compliance Laboratories Corp. (Shenzhen)  
 5/F(B-West) -7/F, the 3rd Phase of Wan Li Industrial  
 Building D, Shihua Road, Futian Free Trade Zone  
 Shenzhen, Guangdong, China.  
 Tel: +86-755-33320018  
 Fax:

**Note:** This test report is prepared for the customer shown above and for the device described herein. It may not be duplicated or used in part without prior written consent from Bay Area Compliance Laboratories Corp.(Shenzhen). This report must not be used by the customer to claim product certification, approval, or endorsement by NVLAP, or any agency of the U.S. Government.



## TABLE OF CONTENTS

<b>1 - General Information</b> .....	<b>3</b>
1.1 Description of LED Light Sources#.....	3
1.2 Standards and Reference Documentations.....	3
1.3 Testing Equipment.....	4
1.4 Drive Level.....	4
1.5 Ambient Conditions for Maintenance Test.....	4
1.6 Photometric Measurement Method and Uncertainty.....	4
1.7 Statement of Traceability.....	4
1.8 Sample Set.....	4
<b>2 - Summary of Test Result</b> .....	<b>6</b>
<b>3 - Test Data</b> .....	<b>7</b>
3.1 Data Set 1, 55°C, 60mA (Lumen Maintenance).....	7
3.2 Data Set 1, 55°C, 60mA (Forward Voltage).....	8
3.3 Data Set 1, 55°C, 60mA (Chromaticity Shift).....	9
3.4 Data Set 2, 105°C, 60mA (Lumen Maintenance).....	10
3.5 Data Set 2, 105°C, 60mA (Forward Voltage).....	11
3.6 Data Set 2, 105°C, 60mA (Chromaticity Shift).....	12
<b>4 - DUT Photo</b> .....	<b>13</b>
4.1 Mechanical Dimensions.....	13
4.2 DUT Photo.....	13
<b>Directions</b> .....	<b>14</b>



# Bay Area Compliance Laboratories Corp. (Shenzhen)

5/F(B-West) -7/F, the 3rd Phase of Wan Li Industrial  
Building D, Shihua Road, Futian Free Trade Zone Shenzhen, Guangdong, China.  
The NVLAP Lab Code is 200707-0

1 - General Information ~~87-001570-369.79 870624 262571 452422506 839.01186424169162789.802g0~~

**Bay Area Compliance Laboratories Corp. (Shenzhen)**

5/F(B-West) -7/F, the 3rd Phase of Wan Li Industrial



## Bay Area Compliance Laboratories Corp. (Shenzhen)

5/F(B-West) -7/F, the 3rd Phase of Wan Li Industrial  
Building D, Shihua Road, Futian Free Trade Zone Shenzhen, Guangdong, China.  
The NVLAP Lab Code is 200707-0

Part Number: HL-A-4014H489W-S1-HR3-DM-HL

Number of Units: 25

Case Temperature: >53°C

Ambient Temperature: >50°C

Life Test Drive Current: 60mA

Measurement Current: 60mA

### Data Set 2: 105°C, 60mA

Part Number: HL-A-4014H489W-S1-HR3-



## Bay Area Compliance Laboratories Corp. (Shenzhen)

5/F(B-West) -7/F, the 3rd Phase of Wan Li Industrial  
Building D, Shihua Road, Futian Free Trade Zone Shenzhen, Guangdong, China.  
The NVLAP Lab Code is 200707-0

### 2 - Summary of Test Result

---

Data Set:	Sample Size	Failures Observed:	Test Interval	Test Duration	
-----------	-------------	--------------------	---------------	---------------	--



### 3 - Test Data

#### 3.1 Data Set 1, 55°C, 60mA (Lumen Maintenance)

No.	(lm)	Lumen Maintenance (%)					
	0hr(Initial)	1000hrs	2000hrs	3000hrs	4000hrs	5000hrs	6000hrs
1	24.60	100.28	99.88	99.76	99.47	99.27	99.07
2	24.68	100.20	99.92	99.80	99.64	99.43	99.31
3	25.25	100.12	99.92	99.72	99.56	99.37	99.09
4	25.25	100.08	99.88	99.72	99.56	99.29	99.05
5	24.93	100.24	100.16	99.84	99.68	99.56	99.28
6	25.55	100.20	99.96	99.57	99.22	99.02	98.79
7	24.89	100.00	99.76	99.48	99.16	98.92	98.71
8	25.13	100.28	99.96	99.72	99.40	99.12	98.85
9	24.84	100.36	100.20	99.88	99.60	99.44	99.15
10	25.20	99.88	99.60	99.29	99.05	98.85	98.65
11	24.84	100.24	99.96	99.68	99.44	99.19	98.95
12	25.56	100.04	99.88	99.53	99.30	99.02	98.83
13	24.92	100.12	99.96	99.68	99.48	99.32	99.16
14	25.01	99.84	99.44	99.16	98.92	98.64	98.44
15	25.65	100.16	99.92	99.73	99.45	99.30	99.10
16	25.00	99.88	99.56	99.20	98.92	98.64	98.52
17	25.06	100.20	99.88	99.76	99.56	99.40	99.24
18	25.13	100.32	99.92	99.68	99.40	99.20	99.01
19	25.05	99.88	99.72	99.48	99.32	99.08	98.88
20	24.90	100.20	99.96	99.76	99.60	99.36	99.20
21	24.98	100.08	99.92	99.60	99.40	99.20	98.88
22	25.27	99.96	99.84	99.53	99.33	99.09	98.85
23	25.54	99.84	99.65	99.45	99.26	99.10	98.86
24	25.45	99.92	99.72	99.61	99.41	99.14	98.86
25	25.04	99.92	99.56	99.52	99.28	99.04	98.84
Avg.	25.11	100.09	99.85	99.61	99.38	99.16	98.94
Med.	25.05	100.12	99.88	99.68	99.40	99.19	98.88
st dev	0.28	0.16	0.18	0.19	0.21	0.23	0.23
Min.	24.60	99.84	99.44	99.16	98.92	98.64	98.44
Max.	25.65	100.36	100.20	99.88	99.68	99.56	99.31



# Bay Area Compliance Laboratories Corp. (Shenzhen)

5/F(B-West) -7/F, the 3rd Phase of Wan Li Industrial  
 Building D, Shihua Road, Futian Free Trade Zone Shenzhen, Guangdong, China.  
 The NVLAP Lab Code is 200707-0

## 3.2 Data Set 1, 55°C, 60mA (Forward Voltage) f233.93 4398 ref188.35.43 44.04 g[f233.93 4398 ref188) 8.45 435.43 44.04 0.47998

No.	Forward Voltage (V)						
	0hr(Initial)	1000hrs	2000hrs	3000hrs	4000hrs	5000hrs	6000hrs
1	3.074	3.091	3.092	3.090	3.100	3.097	3.084
2	3.093	3.082	3.091	3.087	3.077	3.082	3.096
3	3.084	3.074	3.086	3.102	3.101	3.071	3.082
4	3.109	3.091	3.102	3.097	3.088	3.097	3.105
5	3.076	3.078	3.109	3.106	3.087	3.105	3.100
6	3.082	3.105	3.101	3.078	3.101	3.091	3.092
7	3.091	3.080	3.086	3.074	3.089	3.094	3.077
8	3.086	3.072	3.073	3.065	3.092	3.082	3.106
9	3.105	3.091	3.094	3.093	3.094	3.091	3.091
10	3.097	3.084	3.097	3.114	3.083	3.104	3.096
11	3.102	3.103	3.101	3.102	3.094	3.109	3.095
12	3.082	3.074	3.087	3.083	3.091	3.104	3.102
13	3.088	3.084	3.084	3.079	3.077	3.108	3.098
14	3.107	3.088	3.087	3.084	3.103	3.101	3.092
15	3.093	3.084	3.106	3.106	3.079	3.092	3.106
16	3.095	3.095	3.123	3.119	3.099	3.083	3.092
17	3.080	3.078	3.089	3.094	3.081	3.109	3.095
18	3.070	3.072	3.079	3.090	3.109	3.079	3.077
						3.094	3.076



**Bay Area Compliance Laboratories Corp. (Shenzhen)**

5/F(B-West) -7/F, the 3rd Phase of Wan Li Industrial  
Building D, Shihua Road, Futian Free Trade Zone Shenzhen, Guangdong, China.  
The NVLAP Lab Code is 200707-0



## Bay Area Compliance Laboratories Corp. (Shenzhen)

5/F(B-West) -7/F, the 3rd Phase of Wan Li Industrial  
 Building D, Shihua Road, Futian Free Trade Zone Shenzhen, Guangdong, China.  
 The NVLAP Lab Code is 200707-0

### 3.4 Data Set 2, 105°C, 60mA (Lumen Maintenance)

No.	(lm)	Lumen Maintenance (%)					
	Ohr(Initial)	1000hrs	2000hrs	3000hrs	4000hrs	5000hrs	6000hrs
26	25.66	99.96	99.53	99.38	99.06	98.79	98.56
27	24.89	100.08	99.56	99.32	99.08	98.83	98.59
28	25.64	100.08	99.84	99.45	99.18	98.95	98.75
29	25.25	100.20	99.96	99.80	99.60	99.37	99.05
30	25.66	100.16	99.96	99.57	99.30	99.06	98.87
31	25.40	99.76	99.61	99.21	98.98	98.78	98.54
32	24.37	100.12	99.88	99.59	99.38	99.14	98.93
33	25.85	100.19	99.85	99.54	99.30	99.07	98.80
34	25.20	100.08	99.88	99.52	99.29	99.01	98.73
35	25.66	100.19	99.81	99.45	99.18	98.91	98.64
36	24.86	100.12	99.92	99.56	99.28	99.07	98.75



## Bay Area Compliance Laboratories Corp. (Shenzhen)

5/F(B-West) -7/F, the 3rd Phase of Wan Li Industrial  
 Building D, Shihua Road, Futian Free Trade Zone Shenzhen, Guangdong, China.  
 The NVLAP Lab Code is 200707-0

### 3.5 Data Set 2, 105°C, 60mA (Forward Voltage)

No.	Forward Voltage (V)						
	0hr(Initial)	1000hrs	2000hrs	3000hrs	4000hrs	5000hrs	6000hrs
26	3.084	3.082	3.086	3.084	3.084	3.093	3.094
27	3.088	3.086	3.087	3.103	3.091	3.105	3.092
28	3.108	3.118	3.117	3.109	3.099	3.106	3.095
29	3.091	3.093	3.073	3.080	3.088	3.093	3.095
30	3.074	3.072	3.075	3.092	3.084	3.100	3.097
31	3.095	3.091	3.102	3.106	3.099	3.095	3.105
32	3.086	3.084	3.091	3.115	3.100	3.102	3.109
33	3.070	3.070	3.079	3.077	3.086	3.089	3.086
34	3.103	3.099	3.103	3.103	3.096	3.092	3.099
35	3.105	3.105	3.103	3.101	3.091	3.107	3.084
36	3.097	3.097	3.101	3.101	3.100	3.108	3.099
37	3.097	3.095	3.096	3.095	3.096	3.101	3.099
38	3.088	3.091	3.091	3.103	3.090	3.081	3.097
39	3.082	3.082	3.091	3.108	3.096	3.092	3.081
40	3.101	3.101	3.105	3.106	3.093	3.104	3.098
41	3.088	3.091	3.098	3.095	3.090	3.110	3.098
42	3.074	3.076	3.082	3.098	3.098	3.093	3.098
43	3.084	3.084	3.089	3.083	3.087	3.090	3.097
44	3.084	3.082	3.092	3.103	3.108	3.095	3.091
45	3.063	3.065	3.075	3.087	3.110	3.107	3.107
46	3.109	3.118	3.106	3.102	3.099	3.093	3.090
47	3.063	3.065	3.074	3.086	3.086	3.107	3.085
48	3.086	3.086	3.099	3.103	3.096	3.100	3.096
49	3.099	3.099	3.102	3.098	3.097	3.082	3.097
50	3.084	3.084	3.087	3.091	3.087	3.080	3.092
Avg.	3.088	3.089	3.092	3.097	3.094	3.097	3.095
Med.	3.088	3.086	3.091	3.101	3.096	3.095	3.097
st dev	0.013	0.014	0.012	0.010	0.007	0.009	0.007
Min.	3.063	3.065	3.073	3.077	3.084	3.080	3.081
Max.	3.109	3.118	3.117	3.115	3.110	3.110	3.109



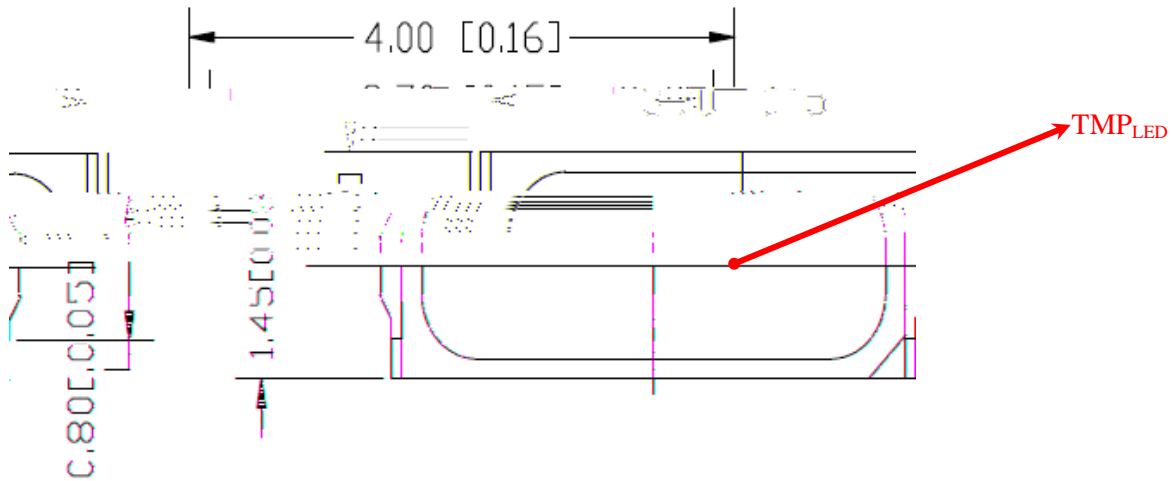
## Bay Area Compliance Laboratories Corp. (Shenzhen)

5/F(B-West) -7/F, the 3rd Phase of Wan Li Industrial  
Building D, Shihua Road, Futian Free Trade Zone Shenzhen, Guangdong, China.  
The NVLAP Lab Code is 200707-0

3.6

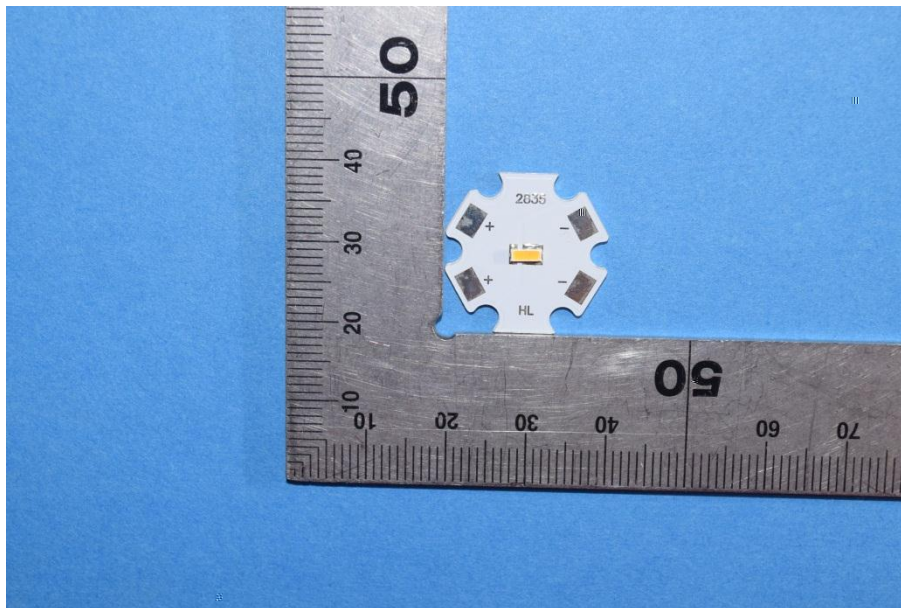
## 4 - DUT Photo

### 4.1 Mechanical Dimensions



All dimensions are in millimeter

### 4.2 DUT Photo





## Bay Area Compliance Laboratories Corp. (Shenzhen)

5/F(B-West) -7/F, the 3rd Phase of Wan Li Industrial  
Building D, Shihua Road, Futian Free Trade Zone Shenzhen, Guangdong, China.  
The NVLAP Lab Code is 200707-0

### Directions

---

\*\*\*\*\*END OF REPORT\*\*\*\*\*