









he e i fb

c d b e h

em h



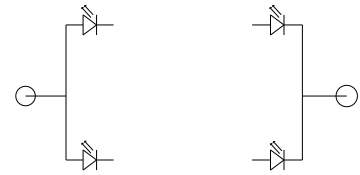
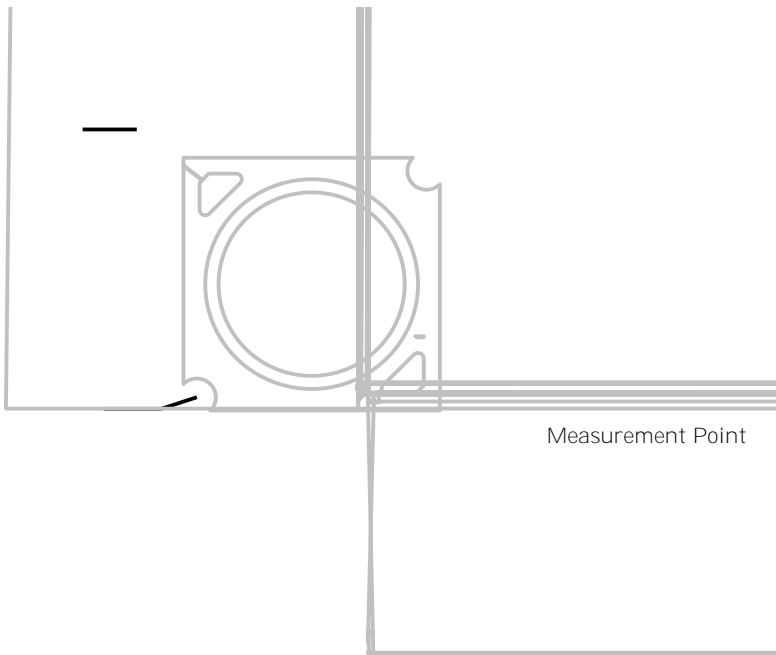
h

h

-
-
-
-
-
-
-
-
-

x x x
 x x
 :





Notes for Table:

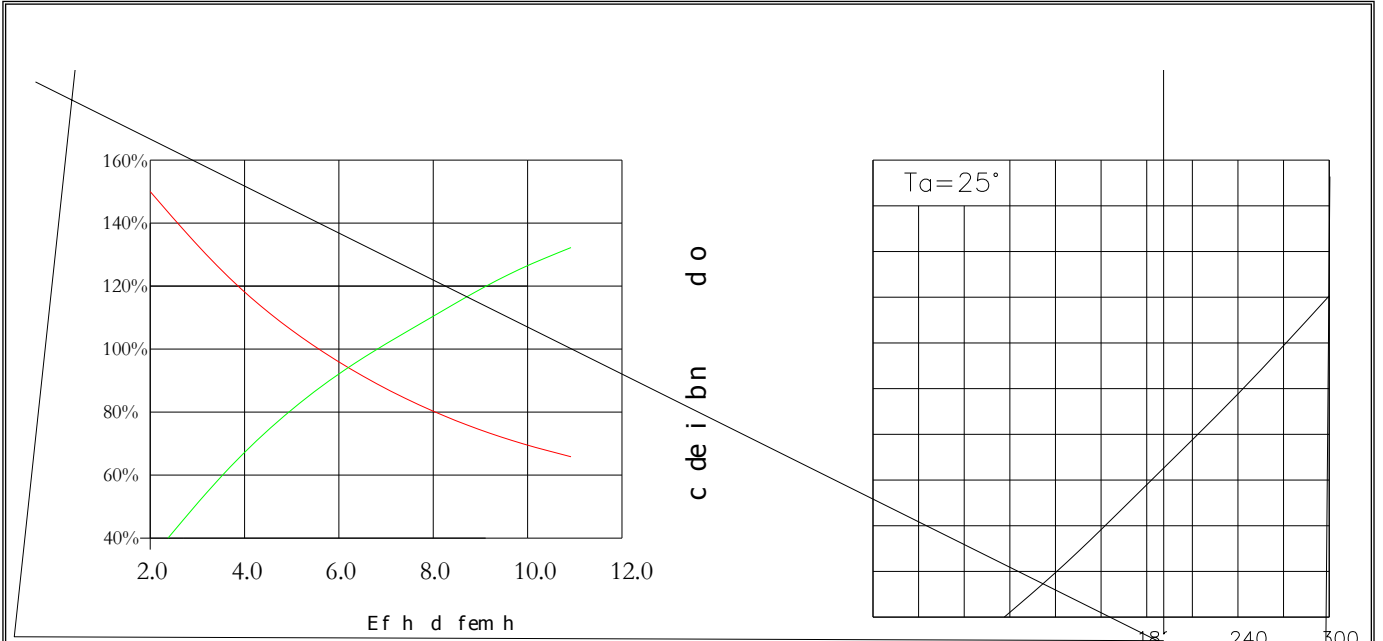
. D.C. Current : $T_j = T_s + R_j \cdot I \cdot \pi$



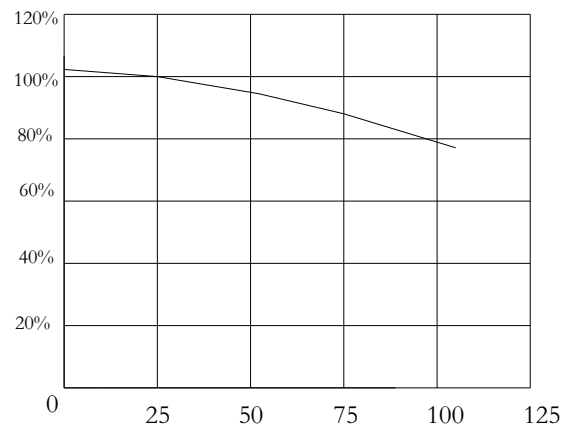
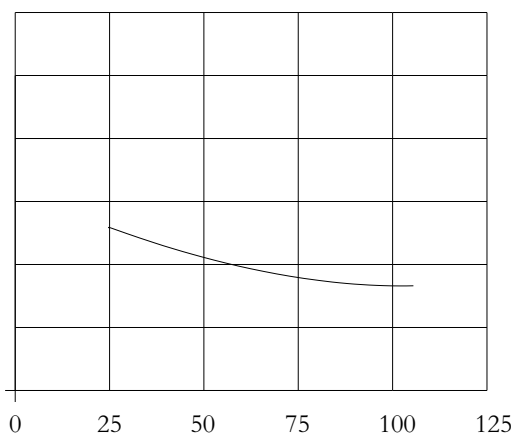
Notes for Table

*







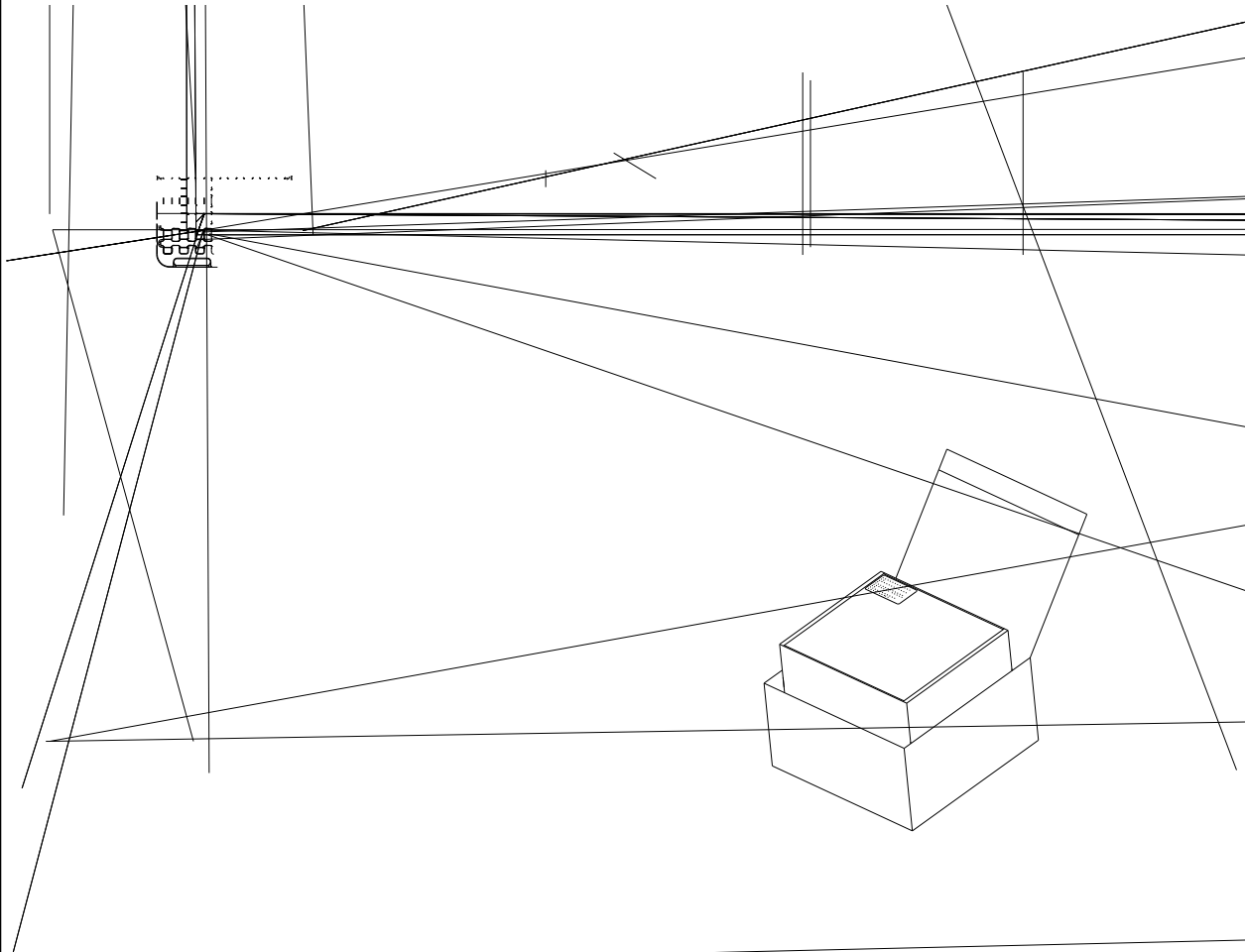
— Efficiency (Green line)
— Power Factor (Red line)





 HONGLITRONIC 鸿利光电		
TYPE:		QTY:
VF:	IF:	ϕV :
TC:	X/Y:	
SBCM:	P-ka:	
DATE:	LOTNO:	

 HONGLITRONIC (Product Identity Card) 鸿利光电	成品标识卡 
品名(Description):	
产品型号(Type):	
发光颜色(Color):	
数量(QTY):	
生产批号(LOT NO):	
出货日期(Date):	





Precaution for use ()

1. Storage

30° C

120° C±5° C

2.

350° C



, COB recommendation colloid surface temperature control ≤ 180
85°C

180°C

- 海 比

-

-

-

COB

2000PPM

